

Corporate Profile

www.jodiconstruction.com





Introduction

Jodi Construction Limited is a mid-tier provider of structural, mechanical, piping and plate-work construction and maintenance services to the mining and mineral resource sector. Jodi Construction is committed to forming long term relationships with our clients by engaging with them in an open and honest manner; and delivering what we promise. Jodi Construction has been operating in West Africa close to three decades and this simple philosophy forms the basis for our continuous growth and success.

OUR HISTORY

The senior management within the company started working in West Africa (Ghana) three decades ago when they undertook a tankage package at the Bogosu Gold Mine. Since that time we have been primarily involved with the mining and oil industries, fabricating and erecting steel tanks, undertaking mechanical, piping and structural installation, carrying out maintenance and shutdown work as well as labour hire to our clients.

OUR APPROACH

When required our office in Perth, Western Australia complements our West African construction team with the coordination and control of specialised design, material supply and project management. When projects require the input of key expatriate personnel and supervisors they are supplied from the very experienced people that have worked for us over many years on our West African projects and are generally based in Perth. The extensive asset range of plant and equipment such as; mobile cranes, welding machines, compressors, plasma cutters, plate rollers, vehicles, trucks and a large array of general and specialised hand tools means that, we can quickly react to our clients need and mobilise personnel and equipment to any site in the region.

As we have operated in West Africa for many years we have a very good database of highly skilled local labour that have been fully trained in our construction and erection methods, first aid, health and safety and understand the requirements of issues like the welding codes and quality procedures we construct to. This database of local personnel have been built up, trained and qualified in various trades by our expatriate supervisors and have proven to be very skilled at their trades. Our local employees are a very important key to our success in West Africa.

We continue to work closely with the local communities and have a company policy that ensures continual training and qualification. Expatriate personnel that are required for project supervision are all familiar with the unique conditions to West Africa and understand the cultural, political, commercial and environmental issues that apply to the different countries. We are proud to have such a long association with West Africa especially Ghana and look to build on our success for many more years to come.

OUR VISION AND VALUES

Our vision and core values are at the heart of everything we do. These guiding principles reach all our people – employees and contractors, all regions and role types, and are detailed below.

Vision - Our vision is to be a market leader in delivering outstanding construction solutions to our clients.

Mission - Achieve value for our clients, growth in profitability for our company, and opportunity and rewards for our staff and shareholders.

Values - Can do approach, integrity, commitment to people, teamwork and delivering quality results.

OUR CULTURE

High Performing Teams - Jodi has built a high performing culture with a core focus on our clients. This culture has seen us continually strive to match the right people to the job – an essential part of successful working relationships.

Supportive Work Environment - We provide our people with ongoing opportunities to learn, lead and specialise across multiple industries. We offer supportive, social work environments, and our people are encouraged to find breakthrough solutions and approaches where these will benefit our customers.

Project Focus - The majority of our business is derived from green and brownfield projects, so our people are seasoned in the delivery of services and projects for greenfield and for brownfield sites.

Our own organisation is closely aligned to our clients in this way, reflected through our continual efforts around project delivery excellence and driving maximum efficiency and performance.



Our Services



Jodi provides comprehensive multi-disciplinary and self-sufficient construction and maintenance services for the mining and oil sector, including; Structural, Mechanical, Piping and Plate work.

We operate in all phases of the project lifecycle including; greenfield, brownfield, shutdowns and combine construction and project management to improve the value and productivity of clients' asset. Our approach is tailored to our clients' specific needs and to ensure each phase is delivered successfully, on budget and to specification.





Site Construction – SMPP

Jodi has significant experience in delivering remote site project management and construction services. We have a proven track record in delivering projects safely and in accordance with quality, schedule and budget requirements.

Jodi has developed effective project management systems that enable us to accurately cost, plan and implement our construction works, ensuring high standards of delivery and low risk. Our construction teams are multi-skilled and innovative and operate under a culture of striving to exceed our clients' expectations.

We provide construction of a greenfield, brownfield processing plants, installation of a plant upgrade in an operating environment, we provide high quality, cost effective construction services including:

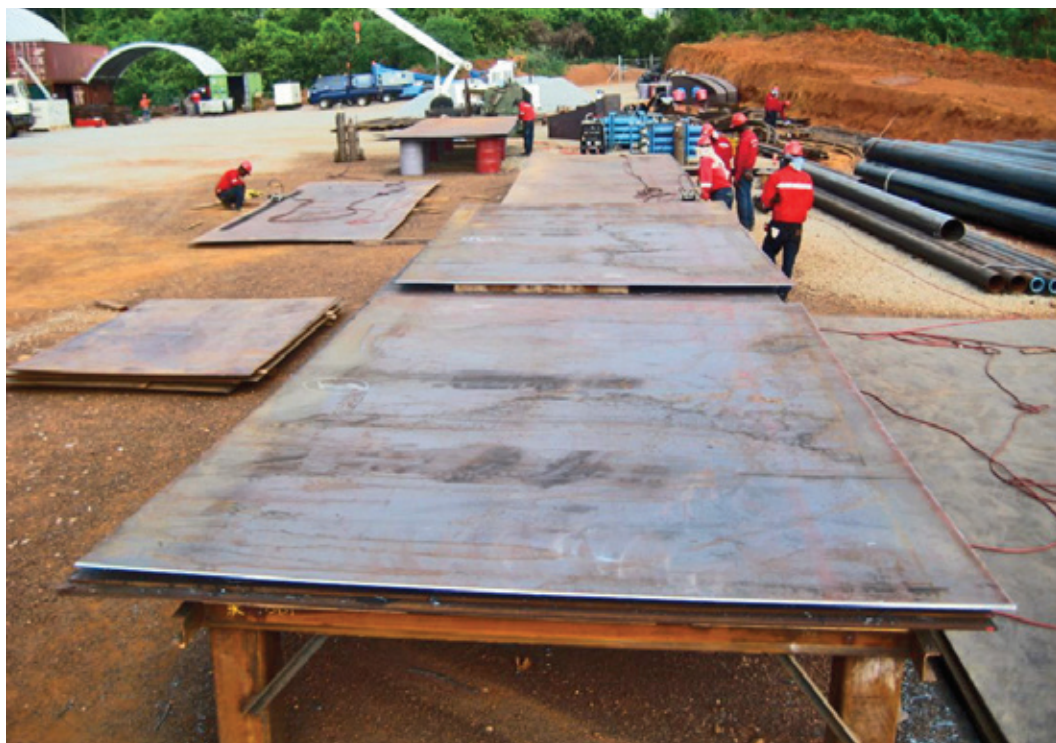
- Construction of fixed and floating roof tanks
- Repairs, dismantling and relocation of tanks and piping
- Structural steel fabrication, erection, installation and plate-work
- Mechanical equipment installation including materials handling, conveyors and process equipment
- Carbon steel, stainless steel, exotic steel and poly piping supply, fabrication and on-site installation
- Refurbishment, repair and relocation of mining plant and equipment
- Field and shop capabilities as well as local and overseas procurement and fabrication of structural steel, plate-work, piping and mechanical equipment

Jodi's commitment to the recruitment and retention of quality personnel is the primary reason that we have been able to consistently deliver a high quality service to our clients. Our specialist workers including construction management staff, welders, boilermakers, mechanical and hydraulic fitters, welders, scaffolders, riggers and machine operators. In addition Jodi has an extensive range of machinery and equipment including mobile cranes, semitrailers, trucks, elevated work platforms, integrated tool carries and light vehicles that give us the versatility and mobility to react quickly and execute a diverse range of projects anywhere in West Africa

With office in West Africa, we have people who understand the legislation, culture, business and labour practices of the communities where we work as well as understanding the intricacies of managing a workforce that includes ethnic, religious and political diversity.

Our HSE management is an integral part of our construction services. Our safety record is exceptional and is recognized by the many awards received on complex and difficult projects. Our outstanding safety performance not only protects lives, but also benefits our clients in terms of increased productivity and reduced project costs. We have a library of Job Safety Analysis and our procedures and work instructions incorporate HSE requirements.

We have an extensive range of general and specific procedures, work instructions and check sheets to support construction execution. Our extensive range of qualified welding procedures coupled with stringent weld control ensures optimum weld quality





Plant Maintenance

Jodi Construction, drawing on the strengths of experience, knowledge and location, offers our clients a fully integrated approach to maintenance and reliability. Our plant maintenance solutions include; major breakdown works, equipment repairs, installation, plant refurbishment and labour hire.

PLANT MAINTENANCE

Jodi provides scheduled, shutdown and emergency maintenance services to existing operations. We have the people, equipment and knowledge to keep clients operations running smoothly and with minimal interruption. From rapid deployment of resources for emergency maintenance to provision of longer term contract maintenance teams, we offer the expertise, knowledge and commitment to ensure optimisation of your plant utilisation and maintenance spend.

Our maintenance personnel aim to integrate seamlessly into our clients' teams. They have exposure to a large range of processes, equipment and problems, bringing best practices, perspective, and excellence in problem solving to clients maintenance requirements.

There again, safety is a major concern of our company and to ensure that we continue to operate to the highest level, we have taken membership of the Australian organisation - Industrial Foundation for Accident Prevention. Membership allows us to train staff in all aspects of OH&S and follow all new initiatives that are being made to eliminate accidents at the work place.

Our proven Reliable and capabilities include;

- Contract plant maintenance and shutdown services
- Sustaining capital works
- Maintenance projects (design and fabricate and install)
- Upgrades, overhauls and major repairs
- Maintenance planning and project scheduling
- Shutdown crews
- Plant inspections
- Technical support
- Operational support
- Labour hire





Project Technical Staffing – (Labour Hire)

The project technical staffing unit is a leading labour hire, recruitment and on-boarding technical staffing focused on the minerals & metals, hydrocarbons and infrastructure.

Our practice is led by proven industry recruiters and consultants who have worked on projects ranging from exploration, start-up sites, and large EPC projects to operations. The PTS unit also have combine years of experience providing on-going labour hire and personnel on boarding to support various greenfield projects to brownfield operations.

As a specialised staffing unit focused on these core industries, we are better able to strategically source candidates for hard-to-fill technical positions. We network extensively with professionals in engineering, construction, maintenance, mining operations, resource exploration and other technical positions.

We are your one-stop shop for contract staffing services supporting the construction and minerals resources industry. We are experts in candidate sourcing, recruiting and contract workforce solutions.

Our services can be performed individually or bundled together as a complete Recruitment Process Outsourcing (RPO) package, tailored to fit your operational needs. In addition to our own areas of expertise, we have strategic affiliations with other niche partner firms and content providers that expand the range of services that our project technical staffing unit can offer.

CONTRACT STAFFING

Our contract staff & workforce demand management strategies will solve your short and long term labour requirements. Our project technical staffing unit has been able to deliver retention rates of (98%) and increase productivity between 20% and 27% & a LTIFR of 0.

Your challenges

- Finding & recruiting quality staff, with the right skills
- High staff turnover impacting the levels of productivity
- Attracting and accommodating people to regional & remote locations of projects.

Our solution

- We offer multiple solutions including flexible rosters, work ready programs, retention strategies, workforce relocation, localising a workforce, rural and regional staffing solutions, international recruitment, and indigenous employment.
- We implement a Capital Performance Improvement (CPI) program on all our projects, which could yield savings of 20% to 25% from previous capital cost forecasts on labour without compromising quality and performance of staff.

ASSIGNMENT SUPPORT

Jodi - Modu brings an expertise and knowledge in the area of regional employee mobility. By leveraging our regional infrastructure, Jodi efficiently manages day-to-day support functions such as:

► Pre-deployment & On-boarding

Thorough and comprehensive process includes reference checks, criminal background checks, pre-employment medicals, drug testing, HSE indoctrination, and malaria control medication (if applicable) and other required inoculations.

► Deployment & Logistics

Professional competence in the area of immigration protocols and compliance including issuance of appropriate visas/work permits. Able to handle all travel logistics (such as airfare, transport) and provide reliable "meet and greet" service upon arrival in the host country.

► Health, Safety and Security

Jodi manages and regularly monitors in country security risks and provides comprehensive emergency medical evacuation coverage. We also vet accommodation and transport providers in accordance with the overall project or contract HSE plan.

► Performance management

Once staff is deployed, Jodi manages all aspects of the employment relationship including time, expense, and payroll processing, performance reviews, and other activities. The company prides itself on its integrity, financial stability, and its ability to meet its payroll obligations on a timely basis each month. Jodi management maintains close ties with appropriate client personnel to ensure service delivery meets expectations.

► Tax compliance

Jodi ensures complete and total compliance with all regulatory and statutory requirements in the host country including personal income tax withholding and reporting.

► Retention

Upon successful completion of assignments, every effort is made to retain contract staff and accordingly resumes are shared amongst the recruitment team to attempt to redeploy personnel to other client opportunities.



A History of Strong Success



During the many years that we have been undertaking SMP projects and specialised tank erection work, we have developed many technics that assist us to undertake this specialised field of construction which has turned out to be cost effective and safe by all standards.

This can be seen in our welding procedures and also the “can” lifting design that we developed to reduce the amount of high level work involved with tankage construction. For example; we are also proud of the work we did to design the welding used on the first large scale stainless steel BIOX tank construction.

The success of this work can be seen in the fact that the tanks at Sansu have operated for many years without any problems resultant from our design and construction.

We list below the major projects that we have undertaken. These projects demonstrate the very extensive knowledge we bring to any construction team when it comes to working with the mining and oil industry and in particular the design and construction of steel tanks and structural mechanical and piping construction.

West African Project List

1. BOGOSU GOLD PLANT

Supply, fabricate and erect Leach and CIL tanks, Reagent tanks, Fuel Storage tanks and Process Thickeners.

2. SANSU GOLD PLANT

Supply, fabricate and erect Leach and CIL tanks, Fuel and Process tanks.

3. IDUAPRIEM GOLD PLANT

Supply, fabricate and erect Leach and Adsorption tanks and Raw water tank.

4. IDUAPRIEM OVERLAND PIPELINE

Supply fabricate and erect Tailings Discharge Line (3000m), Raw Water Supply Line (10,600m), Tailings Water Recovery Line (350m) and Raw Water Dam Recovery Line (750m)

5. BOGOSU CONVEYOR REPAIR

Undertake repairs and modifications to over road conveyor at Bogosu Treatment Plant.

6. SANSU SULPHIDE TREATMENT PLANT

Supply, fabricate and erect mild steel Process tanks, 28No total.

7. SANSU SULPHIDE TREATMENT PLANT

Supply, fabricate and erect 304L stainless steel Process Tanks, 26No total.

8. KONONGO GOLD PLANT

Dismantle, upgrade and refurbish old Craggiemore Plant and erect at Ghana Site.

9. KONONGO GOLD PLANT

Supply, fabricate and erect including civil works, CIL tankage.

10. OBOTAN GOLD PLANT

Supply, fabricate and erect CIL tanks and process water tank.

11. DAMANG GOLD PLANT

Supply, fabricate and erect CIL tanks and Process tanks.

12. BIBIANI GOLD PLANT

Supply, fabricate and erect CIL Tankage.

13. DAMANG GOLD PLANT

Supply, fabricate and install complete plant pipe work.

14. MOBIL OIL FUEL FARM

Design, supply, fabricate and erect 8 Million It Diesel fuel tank, dismantle for erection at a later date a 2 Million It tank, at Teberebie Gold Mine.

15. BIBIANI GOLD PLANT

Supply, fabricate and erect 6th, CIL tank inc. top of tank steel and tie in to existing piping.

16. SANSU SULPHIDE TREATMENT PLANT

Erect new 304L stainless steel BIOX Reactor tank.

17. MOBIL OIL FUEL FARM

Design, supply, fabricate and re erect 2No one Million ltr fuel tanks at the Satellite Gold Mine, constructed from a 2 Million ltr tank dismantled at Teberebie.

18. BIBIANI GOLD PLANT

On site erection of new stockpile conveyor, ROM bin and associated steelwork including a 48hr shutdown to tie in and modify with existing chutes.

19. DAMANG GOLD PLANT

Part supply, erection, commissioning of all structural steel, mechanical and piping for the pebble crushing circuit. Also includes a shutdown period to tie into existing facilities.

20. TARKWA PHASE IV - GOLD PLANT EXPANSION

Detail, supply, fabricate and erection of all site erected tankage.

21. AHAFO - GOLD PLANT

Stage 1- Installation of the project infrastructure piping.

Stage 2- Detail, supply, fabricate and erection of all site erected tanks.

Stage 3- CCD 38m dia. thickener construction complete with sundry tanks.

22. MRP PROJECT - TEMA POWER GENERATION PLANT

All onsite fuel and water tanks and all piping for fuel, air and site services.

23. AKYEM GOLD MINE PROJECT - GOLD PLANT

Detail, supply, fabrication and erection of 11No 15.8m dia. CIL tanks, 16No sundry tanks, 3no 42m dia. thickeners. Design and construction of Shell fuel facility covering 2No 12.5m dia. tanks, 2No horizontal tanks and all associated pipework and associated equipment installation.

24. FLUOR INTERNATIONAL - LOGCAP IV in West Africa

Provide ongoing Labour Hire for LOGCAP IV in West Africa.

25. BISSA - NORDGOLD

Ongoing basis responsible for plant maintenance services.

26. RAIL & PORT OPERATIONS - AFRICA MINERALS LIMITED

contracted in 2011 to provide Labour Hire on an ongoing basis for construction and operations of the Tonkolili Iron Ore, Railway & Ports operations and upgrade. This included provision of over seventy (70) tradesmen for a period of 24months to complete phases 1A & B of the project. Plant Maintenance division has also been involved with the Ports Operations of periodically for shutdown maintenance.

27. LMC MARAMPA - LONDON MINING

From 2011 to 2013 provided labour hire for the construction of the LMC Marampa Iron Ore mine. We staffed and managed over 80 tradesmen and engineers for a period 18months to complete phases 1A & B of the Marampa Iron Ore mine

28. EDIKAN GOLD PLANT MODIFICATION - PERSEUS MINING

Supply, fabrication, installation of Structural, Mechanical and Piping works to interface with operating equipment required to conform to all lock out procedures.

Other Project List

We list below other global mining projects on which we have undertaken contracts

MINE	LOCATION	CLIENT	ENGINEER	DESCRIPTION
Paddington	Kalgoorlie	Pancontinental	Eglo/Davy McKee	CIL and leach tanks, support structure 36m dia thickener and mechanism, SAG and ball mills, pipe racks and misc tanks.
Grants Patch	Leonora	Grants Patch Mining	K C Dodd	CIL and Leach tanks, overcell steelwork, structural steelwork, and mechanical equipment.
Wiluna	Wiluna	Barrack Mines	Barrack Eng Services	Leach tanks, draft tubes, overcell steelwork, installation of agitators.
Wiluna	Wiluna	Barrack Mines	Barrack Eng Services	36,6m dia thickener tank and mechanism, structural steelwork and ball mill.
Boddington	Boddington	Worsley Alumina	Kinhill / BHP Engineering	Leach and adsorption tanks, internal and external launders.
Tanami	Tanami (NT)	Harlock Pty Ltd	Kinhill Stearns	Erection of fabricated metalwork and bins.
Karonie	Karonie	Freeport Pty Ltd	Minproc	Leach and adsorption tanks, wedge wire screens, launders and misc tanks.
Hopes Hill	Southern Cross	Broken Hill Metals	K C Dodd	Leach and adsorption tanks, overcell steelwork and fine ore bin.
Mincoa	Southern Cross	Mincoa	J R Engineering	Leach tanks and launders.
Paddy's Flat	Meekatharra	Whim Creek Consolidated	Minproc	Leach and adsorption tanks, launders and misc tanks.
Mt Gibson	Mt Gibson	Forsayth Mining	K C Dodd	Process tank, structural steelwork and mechanical
Hedges	Boddington	Alcoa	WMC Engineering Services	Leach and adsorption tanks, potable water and process tanks and launders.
Ora Banda	Ora Banda	BHP	J R Engineering	Leach tanks, spiral stairways, overcell steelwork and agitators
Westonia	Westonia	ACM	J R Engineering	Leach tanks, structural steelwork, mechanical equipment and modifications to existing equipment
Big Bell	Cue	Placer Pacific	Placer Dome Engineering	Leach and CIL tanks, launders, baffles and wear plates
Boddington	Boddington	Worsley Alumina	Kinhill / BHP Engineering	Additional leach and adsorption tanks to increase plant capacity to 4.5 MTA.

White Flag	Kundarra	White Flag JV	K C Dodd	Agitation and water tanks, overcell structural steel and piperacks.
Hill 50	Mt Magnet	Hill 50 Gold Mine NL	WMC Eng Services	CIL and leach tanks, overcell structural - steelwork, access stairway, various site and shop fabricated tanks.
Boddington	Boddington	Worsley Alumina	Kinhil / BHP Engineering	Sodium hydroxide, viscosity modifier and HCL tanks.
Kaltails	Kalgoorlie	Anglo Pacific	Minproc	Adsorption and leach tanks and various shop fabricated tankage.
Radio Mill	Bullfinch	Golden Valley Mines	K C Dodd	Agitation tank, fine ore bin and overcell steel
Boddington	Boddington	Worsley Alumina	Kinhill / BHP Engineering	Additional adsorption tanks to increase ace capacity to 6.0 MTA
Granny Smith	Laverton	Placer Pacific	Placer Dome Engineering	Leach and adsorption tanks including launders baffles and pipe droppers.
Fimiston	Kalgoorlie	Bond Gold	Nedpac/Fluor Danial	Additional tanks and support steelwork at roaster site.
Three Mile Hill	Coolgardie	Goldfan Ltd	Minproc	Leach and CIL tanks and various shop fabricated tanks
Bluebird	Meekatharra	Ross Atkins Mining	K C Dodd	Plant expansion including additional leach tanks, launders and pipework.
Mt Keith	Mt Keith	Western Mining	JHCE	Supply and erection of deslime and conditioning tanks.
Bronzewing	Leinster	Great Central Mines	Minproc	Fabrication and site installation of 8 No. tanks and all associated mechanical and structural elements.
Tambo	Chile	Compania Minera Indio S.A.	Signet	Supervision of structural, mechanical, piping and tankage installation on existing mine upgrade.
Bluebird	Meekatharra	St. Barbara Mines	Lycopodium	Procurement, detail, fabricate, paint and erect all structural, mechanical and piping required for plant upgrade.
Paddington	Kalgoorlie	Pancontinental Mining	Signet	Supply and install leach tankage c/w overtank structural and mechanical installation for mine expansion.
Jundee	Wiluna	Great Central Mines	Minproc	Supply, fabrication and erection of leach tankage, structural and mechanical requirements including 450t Quicklime silo.
Granites	Granites, Tanami (NT)	North Flinders Gold Mines	Resources Engineering	Fabrication and installation of tankage, piping and structural requirement for plant refurbishment.
Mt Todd	Mt Todd, NT	Zapopan NL	Bateman Kinhill Kilbourne	Supply and Fabrication of leach tankage (18 No.), including 1 train (9 No.) constructed of Bisalloy 80
Dalgaranga	Mt Magnet	Dalgaranga JV	Lycopodium	Fabrication and Site installation of CIT Tankage and intertank launders.

Sustainability

Sustainability has been integral to our operations and success over the years. Jodi's sustainability mission envisions meeting the needs of our clients while conducting business in a socially, economically, and environmentally responsible manner to the benefit of current and future generations, thereby creating value for all stakeholders. Every day, Jodi helps clients safeguard the environment, conserve energy, protect lives, and strengthen the economies and social structures of communities in which our employees work and live. At Jodi, leadership in sustainability is more than just a responsibility; it is a privilege.

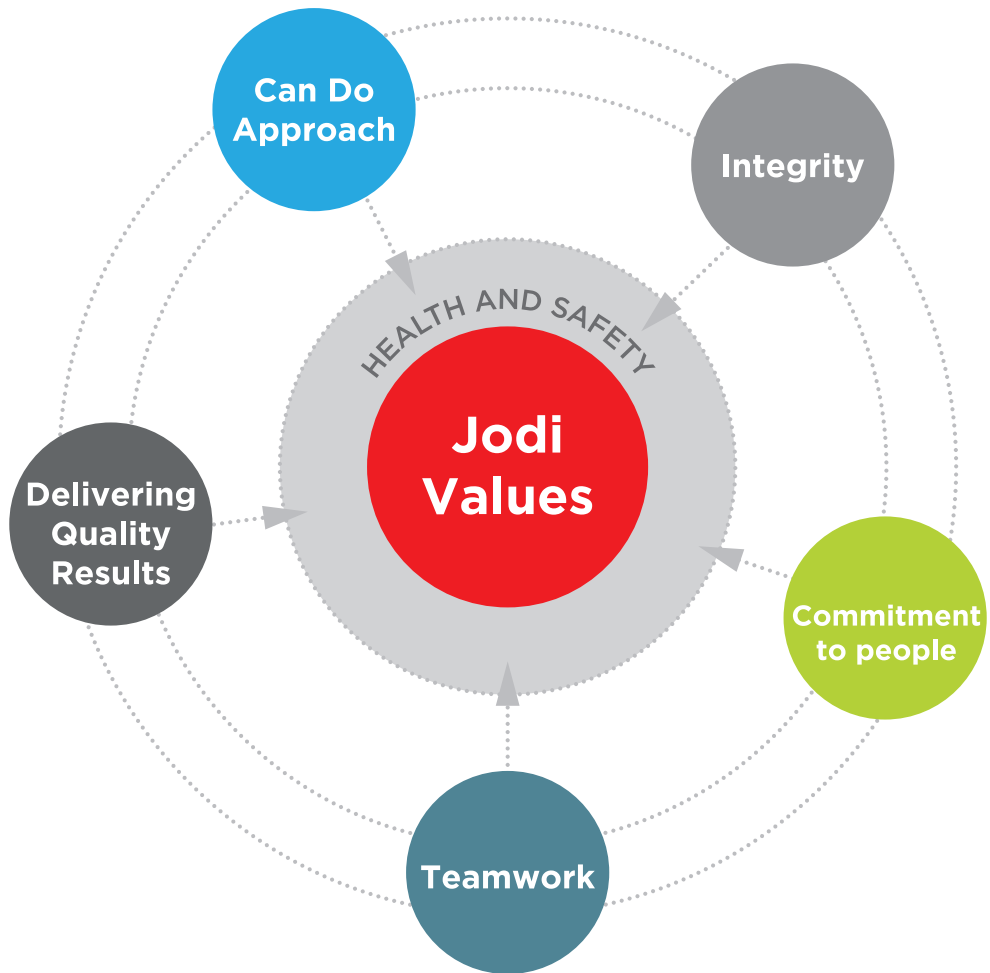
QUALITY

Jodi's management is committed to the development, implementation and continuous improvement of the Integrated Quality Management System. Our management operates a fully integrated Business Management System under the principles of TQM. This holistic encompasses all facets of the business and its respective divisions. Jodi's management strives daily to implement its processes and is driven towards continual improvement so as to advance its activities to better satisfy the requirements of its clients and stakeholders. We are committed to the development, implementation and continuous improvement of our Business Management System through establishing its quality policy, quality objectives, ensuring adequate resource availability, reviewing system performance and by communicating to the organisation the importance of meeting customer and shareholder requirements.

The implementation of the corporate Quality Policy is achieved by working in a planned and systematic manner to formalised standards and procedures following the identification of customer's needs and expectations. This ensures that the required standard of quality and satisfaction with the end product is always achieved.

OCCUPATIONAL HEALTH & SAFETY

We are committed to taking appropriate measures to protect the health, safety and welfare of our employees, customers, contractors, visitors and the community. Zero Harm is an integral part of our philosophy and the company is committed in its operating endeavour to achieve a standard of the highest level in the pursuit of this goal. Across the organisation Jodi's people are committed to maintaining an environment and work practices that support the Zero Harm concept by promoting a culture of health and safety by choice. This is a behavioural based leadership program that supports a culture of accountability and belief that all injuries are preventable and that no task is so important that it cannot be done safely. This program has been integrated into existing systems and has become the way we do things at Jodi Construction.



ENVIRONMENT

We conduct our business activities in a manner that recognises and promotes the importance of sustaining and protecting the environment. Jodi has defined, implemented and maintains measures that are suitable for the specific environment appropriate to the nature, scale and impacts associated with our business activities. We have defined our commitment by:

- Compliance with legal and other requirements
- Establishment and review of agreed Environmental Objectives and Targets
- Regular reporting to the Board on environmental performance including infringements

- Supporting ecologically sustainable development initiatives that are consistent with current technical knowledge
- Establishing internal systems for regular monitoring and review through clearly defined accountabilities, planned activities, timeframes and quality management practices.
- Monitoring and evaluating the environmental performance of subcontractors and suppliers while, implementing effective communication with them on environmental practices.
- Training employees to provide them with continued awareness and knowledge of the environment

We believe that our environmental protection performance demonstrates our values and contributes towards sustainability as a business and in terms of positive relationships with key stakeholders.

COMMUNITY

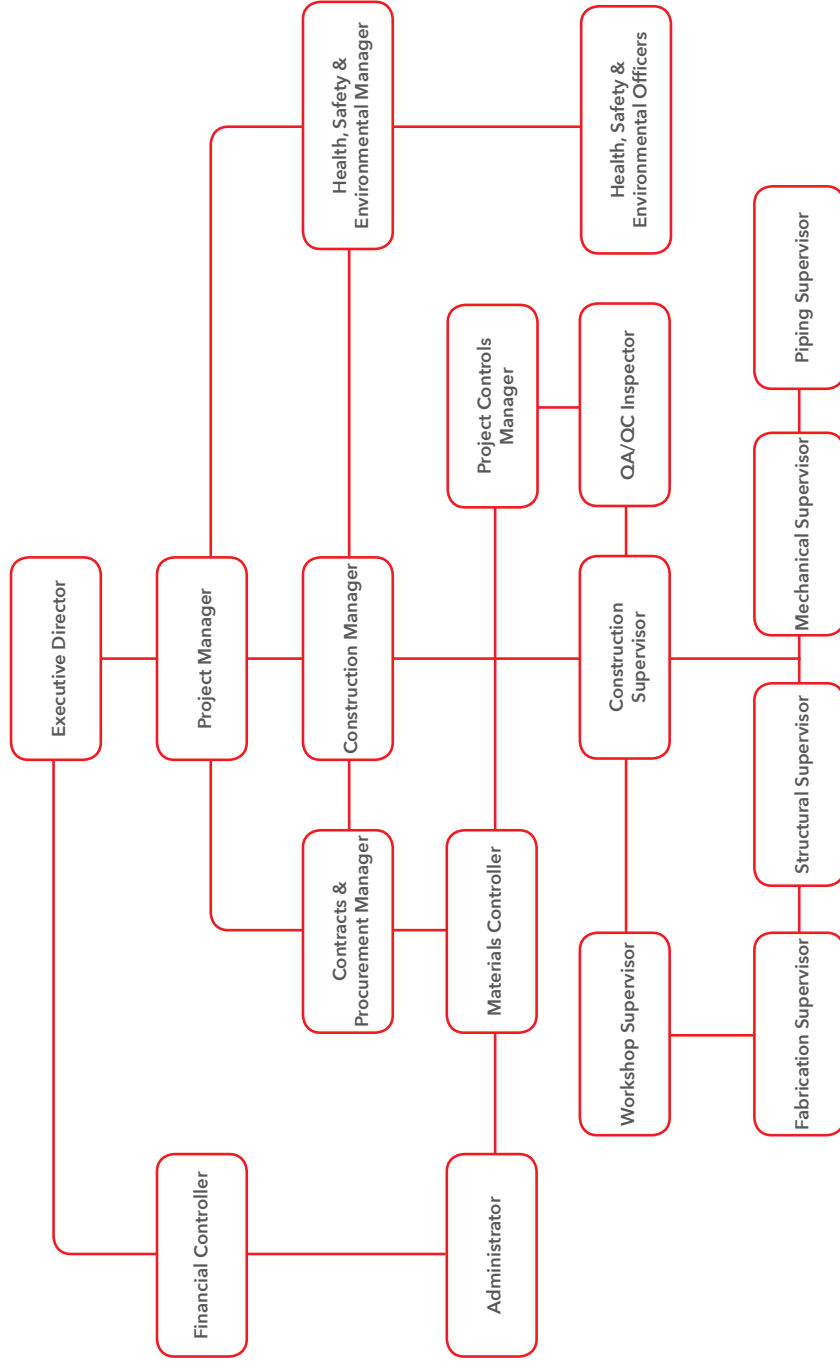
Jodi Construction recognises that long-term and meaningful relationships with the communities we connect with are imperative to the long term success of our business. We seek to achieve and retain these relationships by knowing and managing the impacts we may have on our communities and developing initiatives to deliver mutual benefits now and in the future. To help support these communities in which we operate, we invest in a number of partnerships and community initiatives both at a local and national level. Our employees are involved in a range of community activities and initiatives including local content development through partnerships with clients on trades training, community based health and safety initiatives.

INDIGENOUS INVOLVEMENT

We are a culturally diverse organisation committed to equal opportunity in employment. We are committed to recruiting, developing and retaining the highest calibre of employees in accordance with anti-discrimination policy, recruitment and selection procedures. We respect the diversity of Indigenous culture and appreciate the importance of employing Indigenous personnel throughout our operations. To this end we pledge to;

- Identify relevant and appropriate areas within the Company where positions for Indigenous personnel may be developed.
- Develop specific strategies aimed at assisting Indigenous people to increase access to employment by sourcing and utilising resources promoted by the Local Governments.
- When appropriate, provide relevant training and development opportunities in a culturally appropriate manner
- Recognise the cultural heritage and rights of Indigenous personnel and develop, maintain and promote social awareness and respect throughout the workforce.
- Respect the principles of self-determination

PROJECT ORGANISATION PLAN



Growth Strategy

Jodi Construction welcomes strategic joint ventures and alliances with other multinational industry players seeking to operate in the West Africa region to meet the various local content development requirements. We plan to pursue opportunities to establish multiple operational facilities across the region and continually support our clients in the mineral resources and extraction industries.

We will continue to evaluate and selectively pursue joint ventures and alliances to opening of country offices that will expand our operational capabilities across West Africa. Jodi Construction has at it's disposal, plant, equipment and technical personnel with extensive experience identifying, valuing, executing and integrating our operations. We intend to leverage that experience in the evaluation and execution of future growth.

We are currently looking to establish in countries with significant market share in construction, infrastructure, and minerals resource industry. This strategy will enhance our presence in Africa, further strengthening our relationships with existing clients and having operations across multiple countries.





Our Contacts – We look forward to being of service

Corporate Office

- 📍 1st Floor Block 2, Abwest Business Centre, Texpo
Batsonaa, Spintex Road, Accra Ghana
 - ☎ +233 501 572 280
 - 📠 +233 244 038 623
 - ✉ info@jodiconstruction.com
 - 🌐 www.jodiconstruction.com
-

Other Office Locations

- 🇦🇺 Australia
- 🇸🇩 Burkina Faso
- 🇨🇮 Côte D'Ivoire
- 🇬🇦 Ghana
- 🇸🇱 Sierra Leone
- 🇦🇪 United Arab Emirates, Free-zone